

Corner formation

There is a coat, adjusted to the colour for corner formation.

Edge processing

Version 1: with imi-rost ABS-edges

1. Apply as usual, but switch off the swabble unit and the buffer unit.

Version 2: Coating colour

- Grind MDF edges.
- Clean.
- Apply coating colour with roller or brush.
- Seal twice with matte varnish.



Processing with normal HM-tools

Core material

For the imi-rost product line offers different core materials, depending on customer's preference and application:

- Standard MDF-board
- Coloured MDF-board
- Water-resistant MDF-board
- B1 MDF-board
- A1 mineral coreboard
- Block board with MDF surface
- Birch multiplex plywood
- Water proof PU-Recycling board
- ... or others

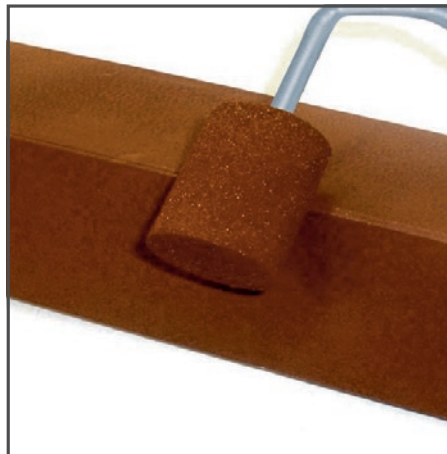
Corner formation with edge set, see backsite.

Please also check our processing Videos:

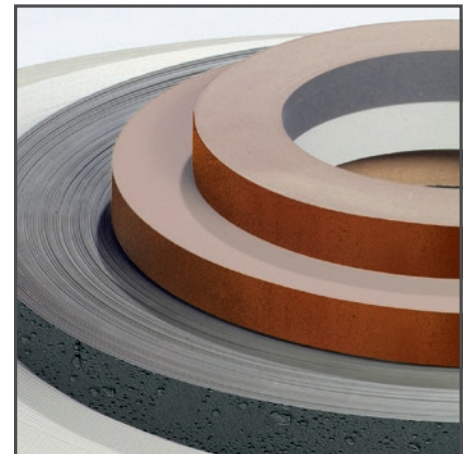
www.imi-beton.com/video-channel



imi-rost coating colour



Apply the coating colour with a roller



imi-rost ABS edges

Accessories

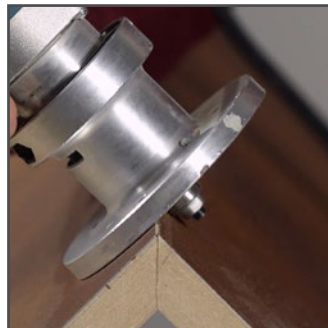
Colour	Designation	Packaging unit	Item no.
rust	Coating colour	1 litre	5000
rust	Coating colour	0.5 litre	5001
rust	Coating colour	0.25 litre	5002
rust	ABS edge	50 m roll (25 mm width)	KG 9400
rust	Original imi-rost edge (HPL)	3 m strips (23 mm width)	IK 9420

Edge processing with imi-rost coating colour:

1. Cut the boards mitred and glue them together.



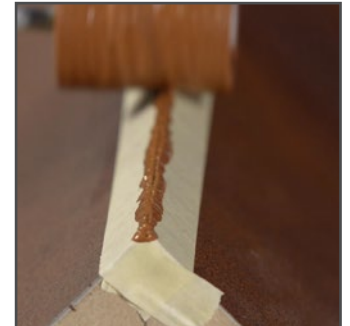
2. After the glue has hardened, you can cut a narrow chamfer with the grinding block or a router.



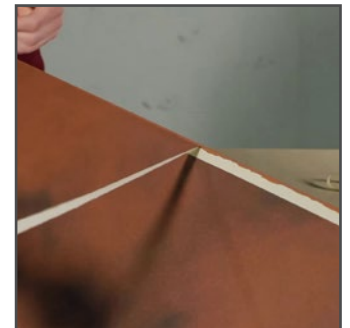
3. The next step is to secure the surface to the edge by a masking tape.



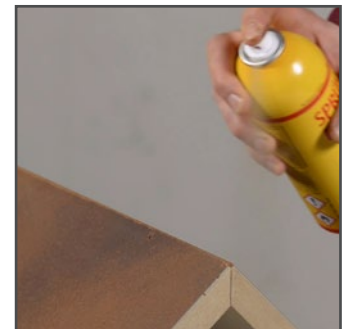
4. Then you can apply directly the coating colour on the chamfer with a paint roller or a paintbrush.



5. Let the colour dry sufficiently and remove then the masking tape.



6. At the end please seal the edge with a 2-component-varnish. For higher resilience, you can varnish the edge several times.



Please also check our processing Videos: www.imi-beton.com/video-channel