

Product description: Outdoor water-resilient composite board

- The **Outdoor** composite board is available in different designs.
- The carrier board is a water-resilient 20 mm PUR-board.
- The rear is PUR raw.
- The top is coated with a flexible, mineral imi- coating with a thickness of approx. 1 – 3 mm depending on the surface.
- It can easily be processed with conventional carbide-equipped carpentry tools.
- The surface is sealed with a varnish.
- Imprints such as scriptures or logos and icons are available on request.
- For use as a backventilated, suspended facade board, we recommend our mineral coating also as a rear counter-pull.
- All other applications must be tested in advance by the user. The PUR recycling board has a lower static strength compared to MDF. Due to the great number of possible uses, we cannot assume any warranty for individual uses.

Usage options:

e.g. outdoor furniture, benches, sight protection walls, facades, platform construction and wherever water resilience is needed.

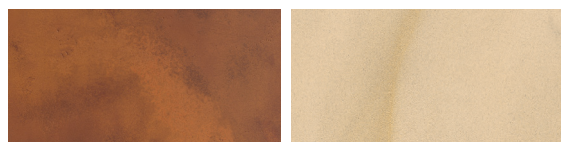
Designs:

223 imi-beton vintage light 224 imi-beton vintage standard 122 imi-beton timber formwork 226 imi-beton vintage anthr.



329 imi-rost smooth

1053 imi-sandstone



The surface 329 imi-rost behave similar to real corten steel.

Technical details:

Dimensions

Standard 2,380 x 1,300 mm

Large 3,380 x 1,300 mm

Customized production

Thicknesses approx. 21 mm

Weight approx. 15 kg/m²

Dimension change after
24 hours of storage in water ~ 0.7 %

Processing:

Edges	Edges must be protected with an ABS edge all around. Alternatively, the imi edge set should be used. Version 1 : ABS-edge 1. Start up as usual, but switch off the swabble unit and the buffer unit. 2. Rework any milled imi-outdoor costing with a varnish and patina. Version 2: process with edge set (see instructions). Version 3: with outer coat (for concealed edges). 1. Grind edges. 2. Clean 3. Apply outer coat with roller or brush. 4. Seal with deep primer 5. Wipe with patina
Sawing/drilling/milling	With regular carbide-equipped tools. Diamond-equipped tools are not necessary.
Screws	Screw extraction resistance similar as in chipboard, pre-drilling is recommended.
Bond	With construction glue item no. 5788.
Cleaning/care	The imi-outdoor surface must be treated like a normally veneered, varnished surface. Cleaning is possible with a moistened rag. Avoid abrasives.
Packaging	Lying on pallet.
Storage	Store dry, interim layers with foam foil.
Recycling	Product is ecologically harmless, can be recycled and disposed of in the household waste.

Information is provided according to our best knowledge. The contents are, however, not legally binding. The user is not released from verifying that the materials are suitable for the intended purpose. Technical changes reserved.

The main component of the mineral imi coating is organic so that colour shadings between different lots can not be excluded completely. Samples of these minerals only show the general appearance and cannot unite the characteristics like colour, texture and structure. Differences of any kind, as well as air inclusions, are natural and no reason for claim. Low distortion as well as little displacements in the joint area and minor gap formation cannot be fully excluded.