

## Product description: imi-marble composite board

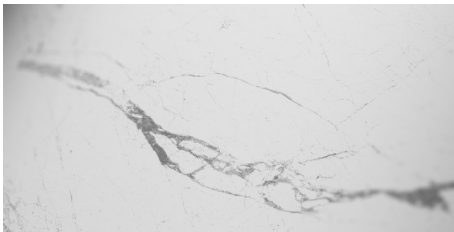
- The **imi-marble** composite board is available in 2 designs.
- The rear is applied with white melamine counter-pull for MDF. For the HPL and PUR board, the rear is raw.
- The top is coated with a flexible, mineral **imi-coating** with a thickness of approx. 1 mm.
- The mineral **imi-coating** is classified according to DIN EN13501-1 as non-flammable A2-s1, d0.
- It can easily be processed with conventional carbide-equipped carpentry tools.
- The surfaces are painted with a matt varnish.
- For a higher strain, we recommend an additional matt protective coat of varnish.
- The surface is subjected to the normal ageing processes.

## Usage options:

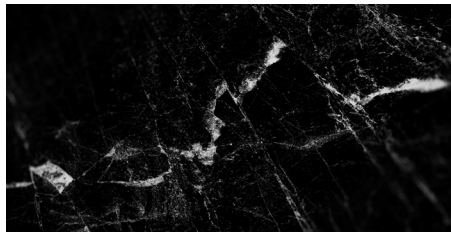
E.g. furniture, inner doors, furniture fronts, shop and trade fair construction, interior design, e.g. wall panellings, platform constructions, etc.

## Designs:

Marble bianco



Marble nero



## Technical details:

Dimensions*	MDF	HPL	mat
Standard	2.600 x 1.010 mm	3.030 x 1.280 mm	2.600 x 1.000
Large	3.030 x 1.200 mm		2.600 x 500 1.000 x 500
			*Other sizes on request
Thicknesses	ca. 20 mm	ca. 2 mm	ca. 3 mm
Weight	ca. 16 kg/m <sup>2</sup>	ca. 3 kg/m <sup>2</sup>	ca. 5,4 kg/m <sup>2</sup>

## Processing:

<b>Edges</b>	Edges must be protected with an ABS-edge all around. <b>Version 1: ABS-edge.</b> 1. Start up as usual, but switch off the swabble unit and the buffer unit. 2. Apply varnish again, if applicable. <b>Version 2:</b> process with <b>imi-marble</b> filler and accent paint.
<b>Sawing/drilling/milling</b>	With regular carbide-equipped tools. Diamond-equipped tools are not necessary.
<b>Screws</b>	Screw extraction resistance as in MDF, pre-drilling is recommended.
<b>Bond</b>	Depending on the substrate, use commercial wood glue or contact glue.
<b>Cleaning/care</b>	The <b>imi-marble</b> surface must be treated like a normally veneered, painted surface. Cleaning is possible with a mist-moistened rag.
<b>Packaging</b>	Lying on pallet.
<b>Storage</b>	Store dry, interim layers with foam foil. Protect from frost.
<b>Recycling</b>	Product is ecologically harmless, can be recycled and disposed of in the household waste.

Information is provided according to our best knowledge. The contents are, however, not legally binding. The user is not released from verifying that the materials are suitable for the intended purpose. Technical changes reserved. The main component of the mineral imi coating is organic so that colour shadings between different lots can not be excluded completely. Samples of these materials only show the general appearance and cannot unite the characteristics like colour, texture and structure. Differences of any kind, as well as air inclusions, are natural and no reason for claim. Low distortion as well as little displacements in the joint area and minor gap formation cannot be fully excluded.