

## Product description: imi composite floor board

- The **imi** floor board element thickness is 20 – 22 mm, depending on the surface.
- Core board is a 19 mm MDF-board.
- The rear is applied with white melamine counter-pull.
- Surface - original **imi**- coating in different designs.
- Processed easily with conventional tools for carpenters.

## Application possibilities:

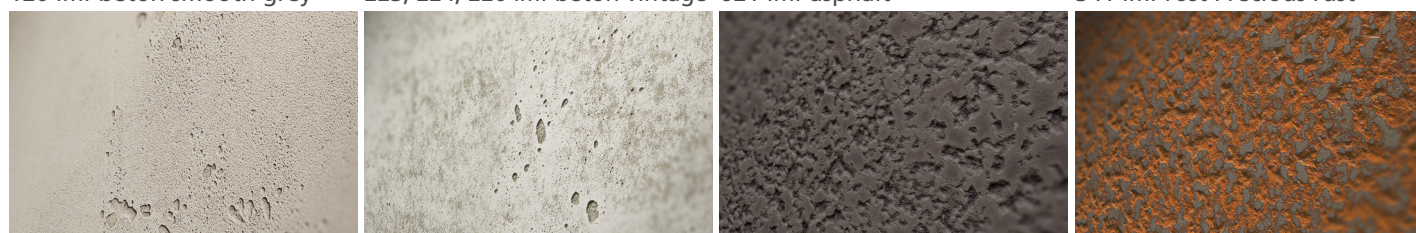
The floor boards with original **imi**- coating are suitable for domestic, general commercial use and for trade fairs. Small damages of the surface can be easily fixed with a special post processing.

## Designs:

120 imi-beton smooth grey





223, 224, 226 imi-beton vintage 621 imi-asphalt

341 imi-rost Precious rust



## Technical details:

Dimensions: standard board size up to 2.600 x 1.010 mm. Other formats on request, maximum 3.400 x 1.300 mm.  
Thickness 20 – 22 mm, weight approx. 16 kg/m<sup>2</sup>

	Utilization class 23 EN ISO 10874	Heavy-duty use in the domestic area
	Utilization class 31 EN ISO 10874 *Higher utilization class possible	Medium use in the commercial sector
	slip resistance: DIN 51130	R9* (*R10 possible with appropriate top coat, see coating recommendation on <a href="http://imi-beton.com">imi-beton.com</a> )
	light fastness: EN ISO 105-B02 Test specimen contrast: EN 20105-A02	blue scale: ≥ 6 grey scale: ≥ 4

### Packaging

Lying on pallet.

### Storage

Store dry, interlayers with foam foil. Protect from frost.

### Recycling

Product is ecologically harmless, can be recycled and disposed of in the household waste.

### Sealing

We recommend that after installation, the imi-beton floor has to be varnished with Remmers Aqua Varnish (Art. 5510) , or comparable floor sealings.

Further informations you can find in the laying instruction: [www.imi-beton.com/downloads](http://www.imi-beton.com/downloads)

Information is provided according to our best knowledge. The contents are, however, not legally binding. The user is not released from verifying that the materials are suitable for the intended purpose. Technical changes reserved.

The main component of the mineral imi coating is organic so that colour shadings between different lots can not be excluded completely. Samples of these materials only show the general appearance and cannot unite the characteristics like colour, texture and structure. Differences of any kind, as well as air inclusions, are natural and no reason for claim. Low distortion as well as little displacements in the joint area and minor gap formation cannot be fully excluded.