

Product description: imi-beton composite board

- The imi-beton composite board is available in 2 thicknesses and 6 designs.
- The default carrier board is a 19 mm MDF- or 0.9 mm HPL board.
- The rear is applied with white melamine counter-pull for MDF. The rear of the HPL board is raw.
- The top is coated with a flexible, mineral imi-beton coating with a thickness of approx. 1 – 3 mm depending on the surface.
- The mineral imi-beton coating is classified according to DIN EN13501-1 as non-flammable A2-s1, d0.
- It can easily be processed with conventional carbide-equipped carpentry tools.
- The surfaces are painted with a matte varnish.
- For a higher strain, we recommend an additional matte protective coat of varnish.
- The imi-coatings can be painted and are available in nearly any colour.

Usage options:

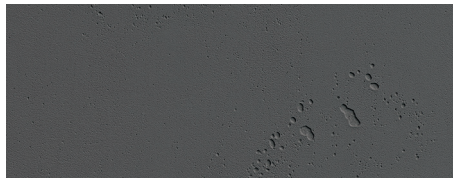
E.g. furniture, inner doors, furniture fronts, shop and trade fair construction, interior design, e.g. wall panellings, platform constructions, etc.

Designs:

120 imi-beton smooth grey



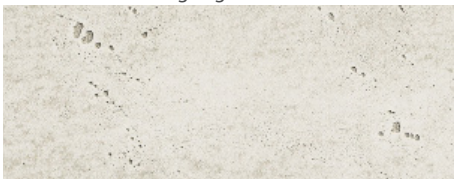
121 imi-beton smooth anthracite



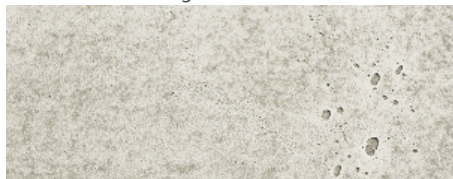
122 imi-beton timber formwork



223 imi-beton vintage light



224 imi-beton vintage standard



226 imi-beton vintage anthracite



Technical details:

Dimensions	MDF	HPL
Standard	2,600 x 1,010 mm	3,030 x 1,280 mm
Large	3,030 x 1,200 mm	
Maximum	3,400 x 1,300 mm	
Customized production		
Thicknesses	approx. 20 mm	approx. 2 mm
Weight	approx. 16 k/m ²	approx. 3 kg/m ²

Processing:

Edges	Edges must be protected with an ABS or real imi-beton edge all around. Alternatively, the imi edge set should be used. Version 1 : ABS or real imi-beton edge. 1. Start up as usual, but switch off the swabble unit and the buffer unit. 2. Re-paint and re-patinate any milled imi-coating with a matte varnish. 3. Apply varnish again, if applicable. Version 2: process with edge set (see instructions).
Sawing/drilling/milling	With regular carbide-equipped tools. Diamond-equipped tools are not necessary.
Screws	Screw extraction resistance as in MDF, pre-drilling is recommended.
Bond	Commercial wood glues.
Cleaning/care	The imi-beton surface must be treated like a normally veneered, painted surface. Cleaning is possible with a mist-moistened rag.
Packaging	Lying on pallet.
Storage	Store dry, interim layers with foam foil. Protect from frost.
Recycling	Product is ecologically harmless, can be recycled and disposed of in the household waste.

Information is provided according to our best knowledge. The contents are, however, not legally binding. The user is not released from verifying that the materials are suitable for the intended purpose. Technical changes reserved. The main component of the mineral imi coating is organic so that colour shadings between different lots can not be excluded completely. Samples of these materials only show the general appearance and cannot unite the characteristics like colour, texture and structure. Differences of any kind, as well as air inclusions, are natural and no reason for claim. Low distortion as well as little displacements in the joint area and minor gap formation cannot be fully excluded.