

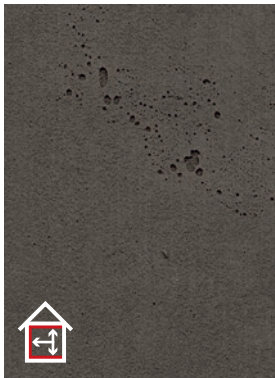
The **imi-beton mat** is a high-quality, elastic polyurethane-based covering.

Designs/Usage options on floor, wall, ceiling:

224 concrete vintage



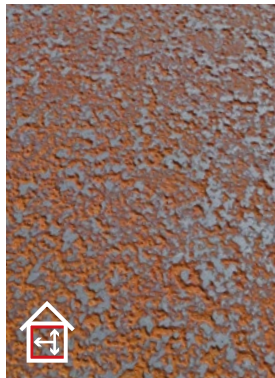
226 concrete vintage anthr.



329 rust smooth



341 precious rust



621 asphalt



Important general information:

Before processing, make sure that the delivered product is in perfect condition, cut or installed goods can no longer be complained. For the installation of **imi-beton mat**, the relevant national standards and guidelines, technical references as well as the recognised rules of the trade apply. In Germany the following guidelines in particular must be observed:

- VOB Part C, DIN 18365 Floor covering work,
- Minimum requirements for screeds DIN 18560 technical rules,
- BEB leaflet: „Assessment and preparation of substrates, installation of elastic and textile coverings“,
- DIN 18202 „Tolerances in building construction“,
- Sanitary - Heating - Air conditioning ZV Leaflet: „Interface coordination for heated floor constructions“.



www.blauer-engel.de/uz120

Acclimatization:

The **imi-beton mat** and installation aids should be acclimatised at least 24 hours before installation in the rooms to be laid, under the following conditions!

Climatic conditions in the room:

- air temperature in the room > 18°C (but not more than 26°C) • soil temperature > 15°C (not more than 22°C)
- relative humidity < 65%.

It must be ensured that the room climate conditions remain constant during the acclimatisation and the setting phase of the adhesive. The above mentioned indoor climate must be maintained for at least 72 hours before, during and after the bonding the flooring.

Requirements on the substrate:

- Sufficient strength, load-bearing capacity, dimensional stability and permanent dryness, free from adhesion-reducing layers such as dust, dirt, oil, grease and loose parts.
- Old floor coverings must be firm, thoroughly cleaned, sanded down and, if necessary, provided with a softener barrier. Perfectly firm, flat adhesive surfaces with functionally adapted absorbency are achieved by means of fillers, layer thickness with vapour-tight coverings, as well as on non-absorbent substrates of at least 2 mm.
- In the wall area, highly absorbent substrates must be primed with a deep substrate.

Installation:

The entire area of the **imi-beton mat** must be covered with adhesive. We recommend the use of low-emission and solvent-free dispersion adhesives for absorbent substrates, wet-bed adhesives are preferable. The application quantity varies depending on the type of adhesive and formulation and as specified by the adhesive manufacturer or the notched trowel specified. The guidelines of the adhesive manufacturers must be observed.

Note: In order to achieve an ideal installation and end result, good adhesive wetting of the back of the covering must be ensured. However, to avoid adhesive crushing, no more adhesive than necessary should be used. An adhesive test can be useful. The following wet adhesives are approved by the respective manufacturers for laying the **imi-beton mat**:

see page 2

Wall:

- Ovalit S and Ovalit P – Metylan
- High-Tack – WULFF (Blue Angel)
- Emiclassic and Durocol – Schönox
- KE 2000 S – Uzin Utz AG (Blue Angel)
- D 3318 MultiFlex – WAKOL (Blue Angel)
- D 3360 VersaTack – WAKOL
- MS 550 PVC- and rubber adhesive – WAKOL
- Bostik's Best – Bostik
- Ardaflex Multi – Bostik

Floor:

- Durocoll – Schönox
- Supra-Strong – WULFF (Blue Angel)
- Multi-Strong – WULFF (Blue Angel)
- KE 2000 S – Uzin Utz AG (Blue Angel)
- D 3318 MultiFlex – WAKOL (Blue Angel)
- D 3360 VersaTack – WAKOL
- MS 550 PVC- and rubber adhesive – WAKOL
- Bostik's Best – Bostik
- Elastostik Xtrem – Bostik
- Ardaflex Multi – Bostik

Absolutely observe:

The **imi-beton mat** must be placed in the adhesive bed after the appropriate airing time, joint tight and stress-free, and then pressed over its entire surface with a suitable rubbing device. A manual pressure roller or a rubbing board is recommended. After bonding, we recommend that the floor covering be evenly rolled with a heavy link roller (min. 50 kg) within the installation time specified by the manufacturer.

In order to maintain the high quality in the floor area, additional sealing is necessary in any case. For this purpose we recommend a 2-component water-based lacquer. Please follow the processing guidelines of the respective manufacturer.

A coating recommendation can be found on our website at :



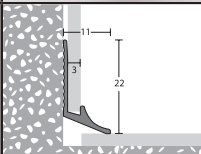
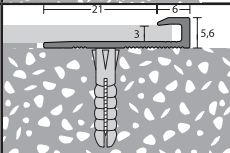
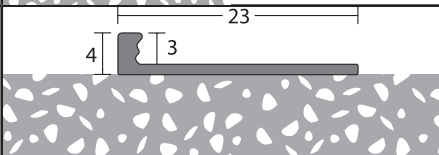
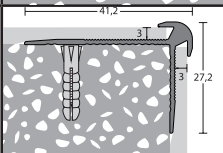
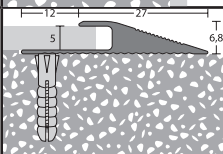
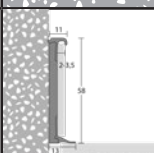
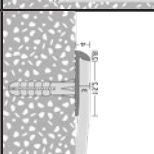
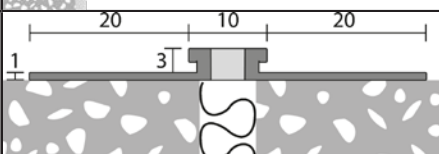
<https://www.imi-beton.com/images/downloads/processing-notes/>

Commissioning / loading of the laid surface should only take place after the adhesive has completely set (observe the instructions of the adhesive manufacturer). Please note that the contractor is obliged to maintain a completed but not yet approved trade (protection of the floor covering against damage by subsequent trades). By partial acceptance, the obligation to maintain the accepted areas passes to the customer.

Please note for the article **MVG 1003 (sharp-edged)**: Before laying, we recommend that the edges on the decor side are easily grind (deburred).

Accessories on page 3

These references do not claim to be complete. Due to the processing and application conditions beyond our control and the large number of different material constellations with regard to substrate and adhesive, we recommend that you observe the technical data sheets of the respective adhesive manufacturer and carry out your own adhesive tests. A liability for concrete application results can therefore not be derived from the information and references in this leaflet. For technical application questions, further information or advice on individual installation, please send an e-mail to anwendungstechnik@imi-beton.com, or visit us on the Internet at www.imi-beton.com

Accessories:		
Art. no.	Description	Illustration
5510	Remmers Aqua Varnish Package, components A + B, 5,50 kg (approx. 50 m ²)	
5550	Impact sound underlay	
5580	Aluminium bottom profile, for thicknesses of 2,5 – 3 mm	
5560	Aluminium slide in profile, perforated, for thicknesses of 2,5 – 3 mm	
5590	Aluminium border profile, punched, for thicknesses of 3 mm	
5570	Aluminium stair nosing profile, perforated, for thicknesses of 3 mm	
5600	Aluminium ramp profile, perforated, for thicknesses of 4,5 – 5 mm	
5620	Plastic batten to glue	
5610	Aluminium border profile (order as two parts together with Art. 5580)	
5630	Transition profile 48 x 4 mm	
5640	imi-beton mat base strip for profile Art. 5620, 51 x 3 mm, 2500 mm length	