

Product description: imi-asphalt composite board

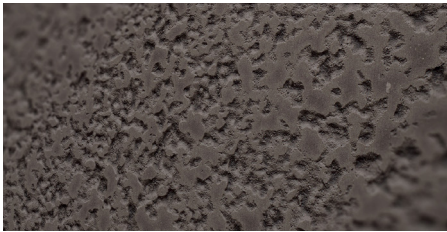
- The **imi**-asphalt composite board is available in 3 thicknesses.
- The default carrier board is a 19 mm MDF, 3 mm HDF or 0.9 mm HPL board.
- The rear is applied with white melamine counter-pull for MDF. The HDF board is painted white at the back; the rear of the HPL board is raw.
- The top is coated with a flexible, mineral **imi**-asphalt coating with a thickness of approx. 1 – 3 mm.
- The mineral **imi**-asphalt coating is classified according to DIN EN13501-1 as non-flammable A2-s1, d0.
- It can easily be processed with conventional carbide-equipped carpentry tools.
- The surfaces are painted with a matte varnish.
- For a higher strain, we recommend an additional matte protective coat of varnish.
- The surface is subjected to the normal ageing processes.

Usage options:

E.g. furniture, furniture fronts, shop and trade fair constructions, interior design, e.g. flooring, platform constructions, etc.

Designs:

621 imi-asphalt



Technical details:

Dimensions	MDF	HDF	HPL
Standard	2,600 x 1,010 mm	2,600 x 1,010 mm	3,030 x 1,280 mm
Large	3,030 x 1,200 mm	3,030 x 1,200 mm	
Maximum	3,400 x 1,300 mm		
Customized production			
Thicknesses	approx. 21 mm	approx. 5 mm	approx. 3 mm
Weight	approx. 16 k/m ²	approx. 4.5 kg/m ²	approx. 3 kg/m ²

Processing:

Edges	Edges must be protected with an ABS or real imi -asphalt edge all around. Alternatively, the imi edge set should be used. Version 1 : ABS or real imi-asphalt edge. 1. Start up as usual, but switch off the swabble unit and the buffer unit. 2. Re-paint and re-patinate any milled imi-coating with a matte varnish. 3. Apply varnish again, if applicable. Version 2: process with edge set (see instructions).
Sawing/drilling/milling	With regular carbide-equipped tools. Diamond-equipped tools are not necessary.
Screws	Screw extraction resistance as in MDF, pre-drilling is recommended.
Bond	Commercial wood glues.
Cleaning/care	The imi -asphalt surface must be treated like a normally veneered, painted surface. Cleaning is possible with a mist-moistened rag.
Packaging	Lying on pallet.
Storage	Store dry, interim layers with foam foil. Protect from frost.
Recycling	Product is ecologically harmless, can be recycled and disposed of in the household waste.

Information is provided according to our best knowledge. The contents are, however, not legally binding. The user is not released from verifying that the materials are suitable for the intended purpose. Technical changes reserved.

The main component of the mineral imi coating is organic so that colour shadings between different lots can not be excluded completely. Samples of these materials only show the general appearance and cannot unite the characteristics like colour, texture and structure. Differences of any kind, as well as air inclusions, are natural and no reason for claim. Low distortion as well as little displacements in the joint area and minor gap formation cannot be fully excluded.